



# T5

## 14T5HE/46-840/IF21/G/DIM 10/1

Philips T5 LED tubes offer an affordable, energy saving retrofit solution. The T5 lamps have been engineered to withstand the test of time with a 50,000-hour lifetime and a limited 5-year warranty to back it up. The lighting performance effectively replaces conventional fluorescent T5 HO or T5 HE lamps. Available in either InstantFit (Type A or Type C) or MainsFit (Type B / Ballast bypass), Philips T5 TLEDs provide a variety of options for any application.

### Product data

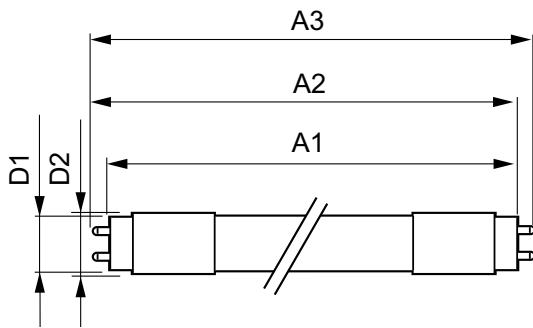
General Information		Lamp Current (Min)	
Cap-Base	G5 [ G5]	Lamp Current (Min)	150 mA
EU RoHS compliant	Yes	Starting Time (Nom)	0.5 s
Nominal Lifetime (Nom)	50000 h	Warm Up Time to 60% Light (Nom)	0.5 s
Switching Cycle	50000X	UL Type	Type A - works on ballast
Light Technical		Power Factor (Nom)	0.9
Color Code	841 [ CCT of 4100K (841)]	Voltage (Nom)	70-105 V
Beam Angle (Nom)	200 °	Temperature	
Luminous Flux (Nom)	2100 lm	T-Ambient (Max)	45 °C
Color Designation	Cool White (CW)	T-Ambient (Min)	-20 °C
Correlated Color Temperature (Nom)	4000 K	T-Storage (Max)	65 °C
Luminous Efficacy (rated) (Nom)	150.00 lm/W	T-Storage (Min)	-40 °C
Color Consistency	<6	T-Case Maximum (Nom)	70 °C
Color Rendering Index (Nom)	82	Controls and Dimming	
LLMF At End Of Nominal Lifetime (Nom)	70 %	Dimmable	Yes
Operating and Electrical		Mechanical and Housing	
Input Frequency	40000-110000 Hz	Bulb Material	Glass
Power (Rated) (Nom)	14 W	Product Length	1200 mm
Lamp Current (Max)	350 mA		

# T5

Bulb Shape	Tube, double-ended
<b>Approval and Application</b>	
Energy Saving Product	Yes
Approval Marks	UL certificate RoHS compliance DLC compliance
Energy Consumption kWh/1000 h	- kWh
Energy Certifications	DLC Standard
<b>Product Data</b>	
Order product name	14T5HE/46-840/IF21/G/DIM 10/1

EAN/UPC - Product	046677476519
Order code	476515
Numerator - Quantity Per Pack	1
Numerator - Packs per outer box	10
Material Nr. (12NC)	929001824104
Net Weight (Piece)	0.146 kg

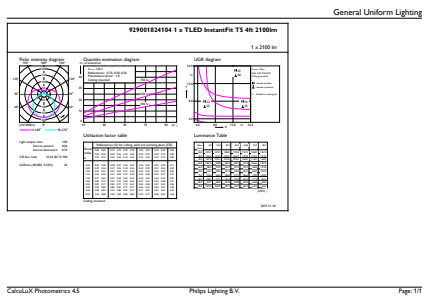
## Dimensional drawing



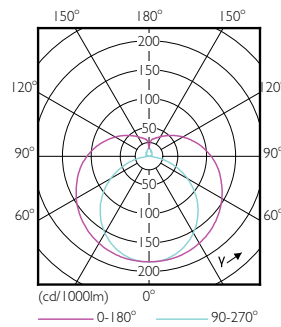
TLED 1200mm HFV16-28W 2100lm 4000K ND

Product	D1	D2	A1	A2	A3
14T5HE/46-840/IF21/G/DIM 10/1	15.3 mm	18.4 mm	1147.8 mm	1154.9 mm	1162 mm

## Photometric data

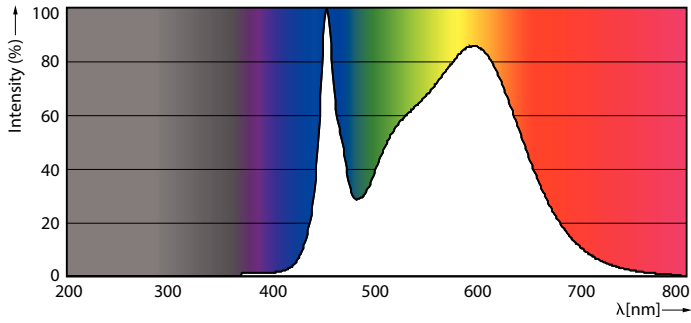


LEDtube 14W G5 840 200D DIM IF21



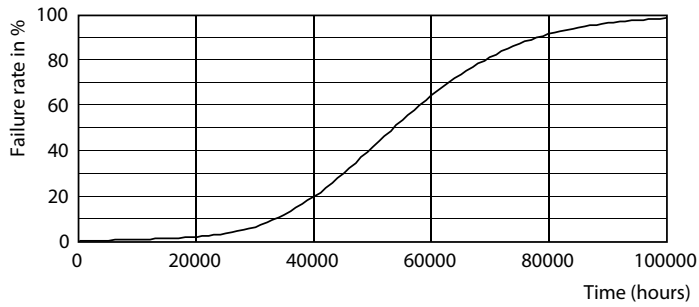
LEDtube 8W G5 830 200D DIM IF10

Photometric data

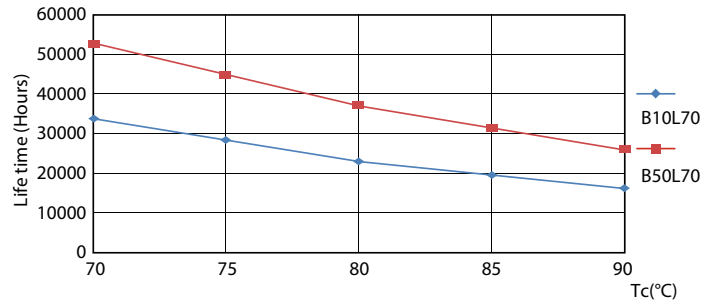


LEDtube 14W G5 840 200D DIM IF21

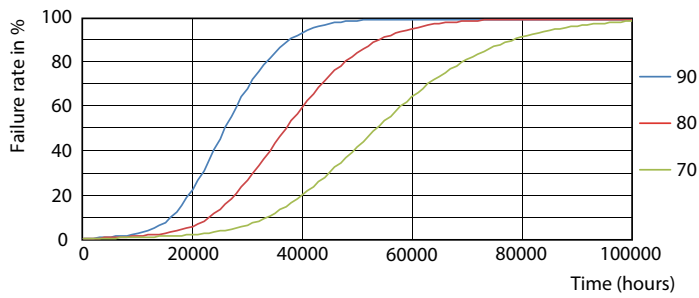
Lifetime



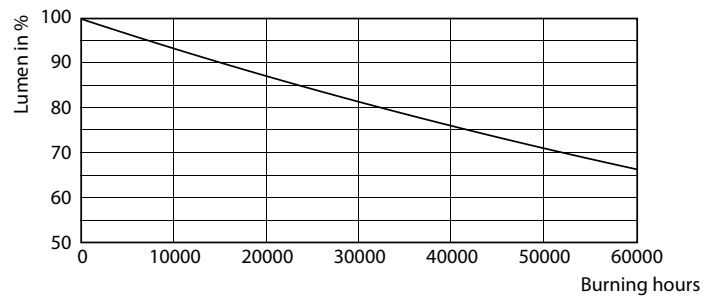
LEDtube 8-14W G5 830-850 200D DIM IF10-21



LEDtube 8-14W G5 830-850 200D DIM IF10-21



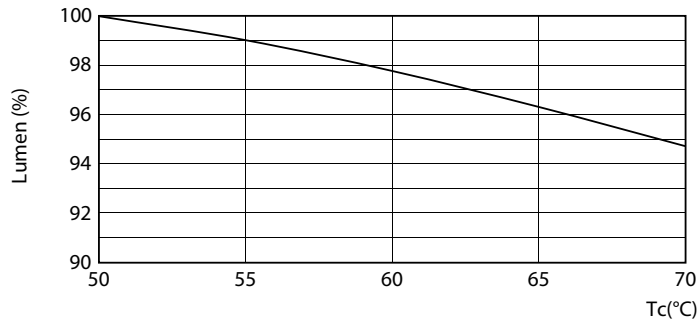
LEDtube 8-14W G5 830-850 200D DIM IF10-21



LEDtube 8-14W G5 830-850 200D DIM IF10-21

# T5

## Lifetime



LEDtube 8-14W G5 830-850 200D DIM IF10-21

